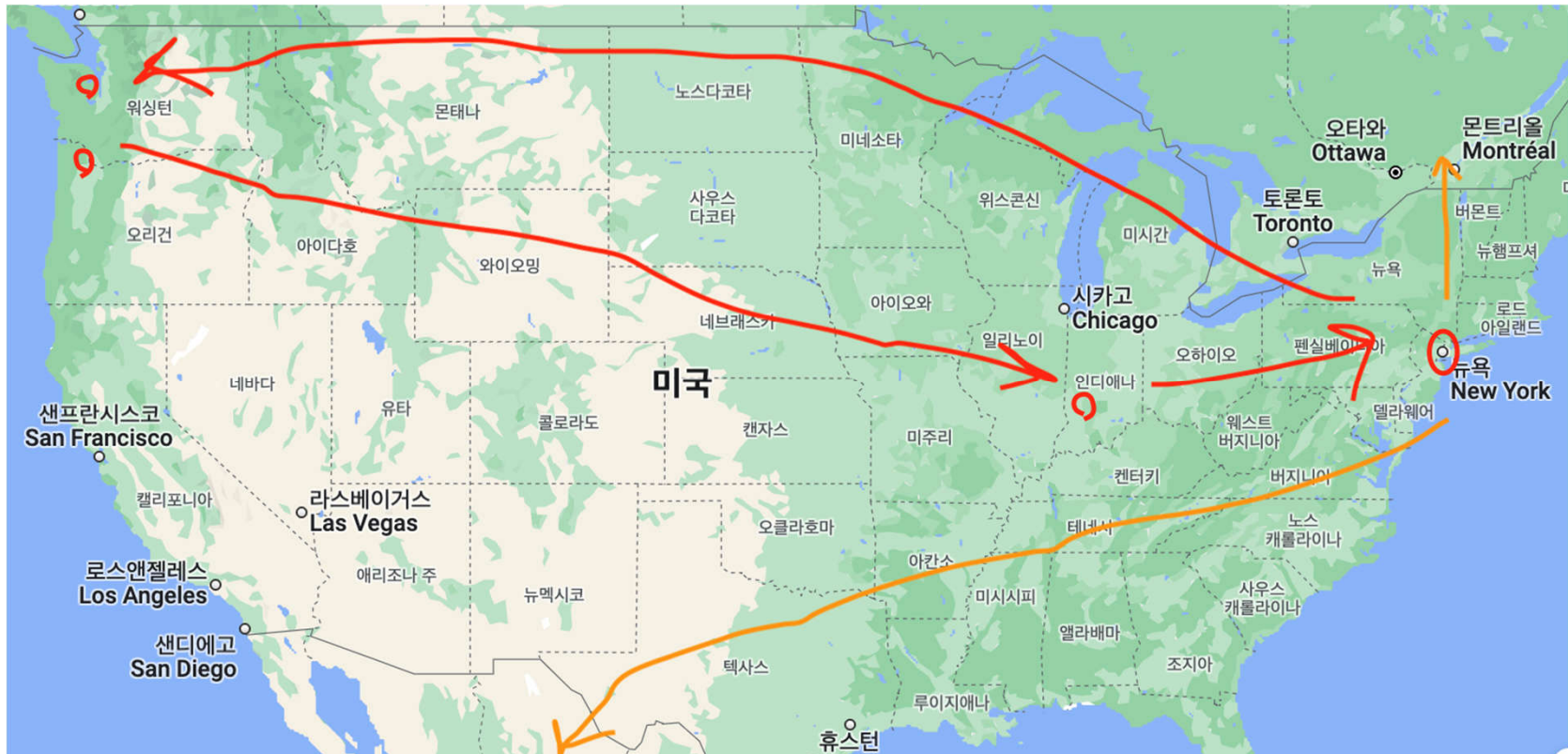


거북섬 공동체들

# 코뮌/공동체....

코뮌에 대해 구체적인 언어로 이야기하게 되면 코뮌이란 단순히 어떤 곳에 사물이 공유되어 있는 특정한 장소로 상상하기 쉽다. 당연히 이것도 코뮌이 뜻하는 것의 한 측면이지만 그러한 이미지는 다가 아니다. 우리는 코뮌을 다차원적으로 생각해보고 싶다. 즉, 공동으로 짜여진 윤리에 의해 묶인 영토의 연결 망으로, 많은 것들의 어떤 “함께 두기,” 그것이 물질적인 것이든 그렇지 않은 것이든 (예를 들어, 차, 돌봄, 돈, 슬픔, 지식, 도구, 화장품, 등), 그리고 마지막으로 어떤 관계성으로—즉, 새로운 함께 하기의 방법 뿐만 아니라 우리를 파괴하는 대신 더욱 강하게 만드는 적대성의 형식들을 발생시키는 일종의 마술 말이다.

# 거북섬 (Turtle Island) — 선주민/투쟁의 관점에서 볼 때 정말 미국이라는 국가는 부정되어야. 비식민화(Decolonization)



# 지역별로 이야기하겠습니다:

1. 뉴욕 (뉴욕시)
2. 북서부 (워싱턴, 오레곤)
3. 중서부 (인디애나주 블루민턴)

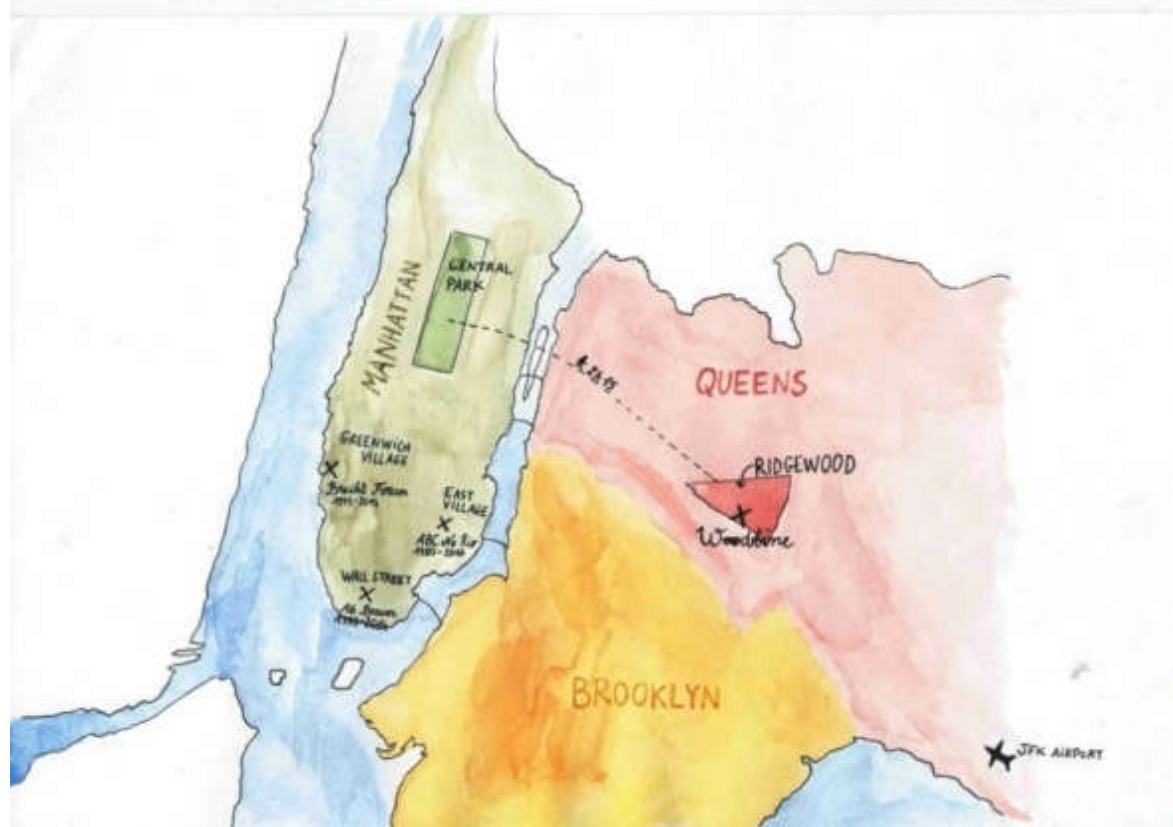


# 1. 뉴욕 (뉴욕시 퀸즈)

- Woodbine
- Club A
- “Our House”

# Woodbine

- 2014년 설립 (오큐파이 이후의 흐름)
- 허리케인 샌디 (기후 문제)
- 스탠딩락 (Standing Rock) 연대 (선주민, 지구적 문제로서의 반-자본주의)
- 인류세
- 자율, 공유, 기술론 및 존재론적 철학, 코스몰로지...
- 지구 관계망에서의 “거주”
- 팬데믹 이후 상호부조 네트워크:  
심비오시스 Symbiosis → 이중권력의 구상

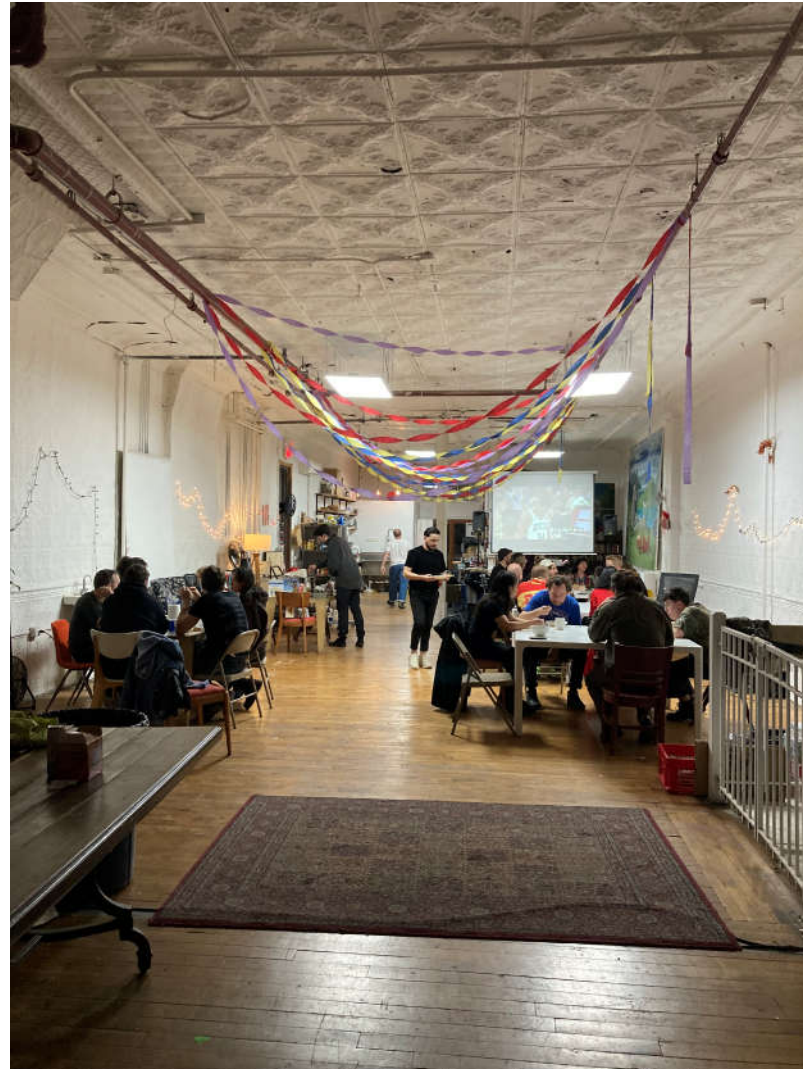


# 무료 식량 저장고 (food pantry)

- 월요일, 수요일 아침 10시



# 일요일 저녁 식사



# 행사 (모임, 상영회, 강연.....)









# Club A

- 지자체 소유 커뮤니티 가든 (공동체 텃밭)을 점거/관리
- 식량 저장고 운영
- 다양한 행사 (음악 공연, 상영회, 등)

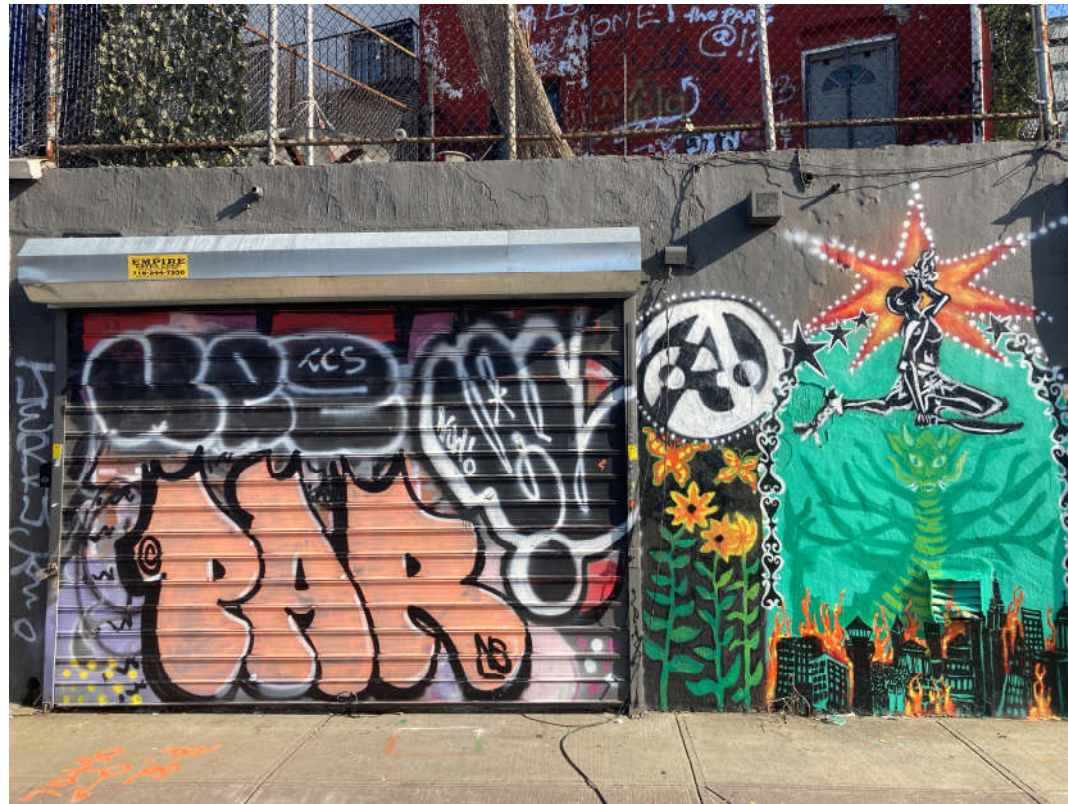






# “Our House”(我们家)

- 팬데믹 이후 2022년 설립?
- 감옥폐지 운동
- 선전, 직접행동 활동



# 감옥 폐지 운동

- 뉴욕시 라이커즈 섬(Rikers Island) -1년이하의 형 선고 받은 자들 수용
- 사망자: 2022년 18명, 2021년 16명
- 현재 뉴욕시당국은 4개의 새로운 감옥 건설 추진 중
- 상업시설과 복합형으로 시내에 건설
- 감산복합체(prison industrial complex)
- 철폐주의(폐지주의 abolitionism)-노예제를 기원







# 미 북서부 (워싱턴, 오레곤)의 공동체들

- 90년대-2000년대 환경파괴에 저항하는 직접행동의 흐름과 탄압 (나무 지키미 및 기타 직접행동)
- 반세계화운동의 물결 (시애틀, 칸쿤, 와하카....)
- 선주민투쟁
- 카스카디아Cascadia (Bioregion 생명지역주의)
- 현재 기후 문제 (거대 산불의 발생)







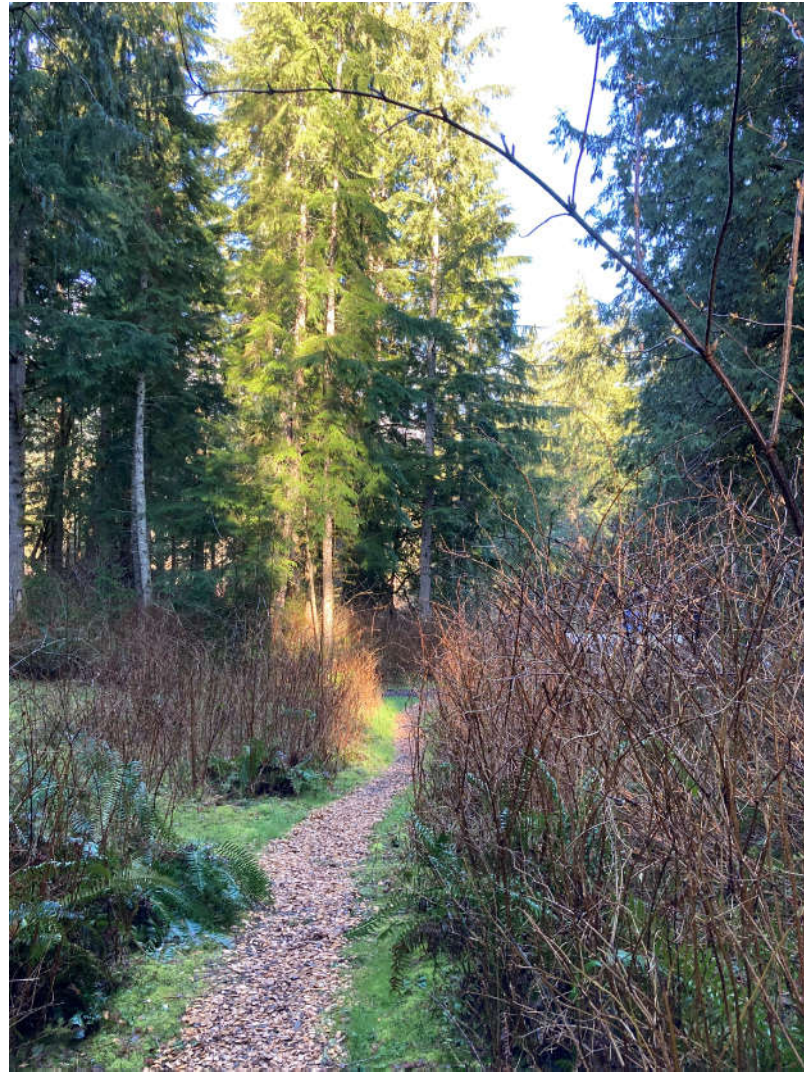














주변 환경(사회적 풍경)

일본계 이민의 후손이 경영하는 농장, 반이민,  
전쟁...현재 이 지역의 진보 다양성을 보여줌









**EXTRA LARGE HASS AVOCADOS**

EACH

*Every Day!*

**2.99**

ea

\$2.99

PER EACH

979 34010672

PLU #4770

SUNFLOWER  
KERNELS  
SALT ROASTED

SUNFLOWER  
KERNELS

SUNFLOWER  
KERNELS



# Olympia 약수터





## 극장 입구 (오래된 영화관)





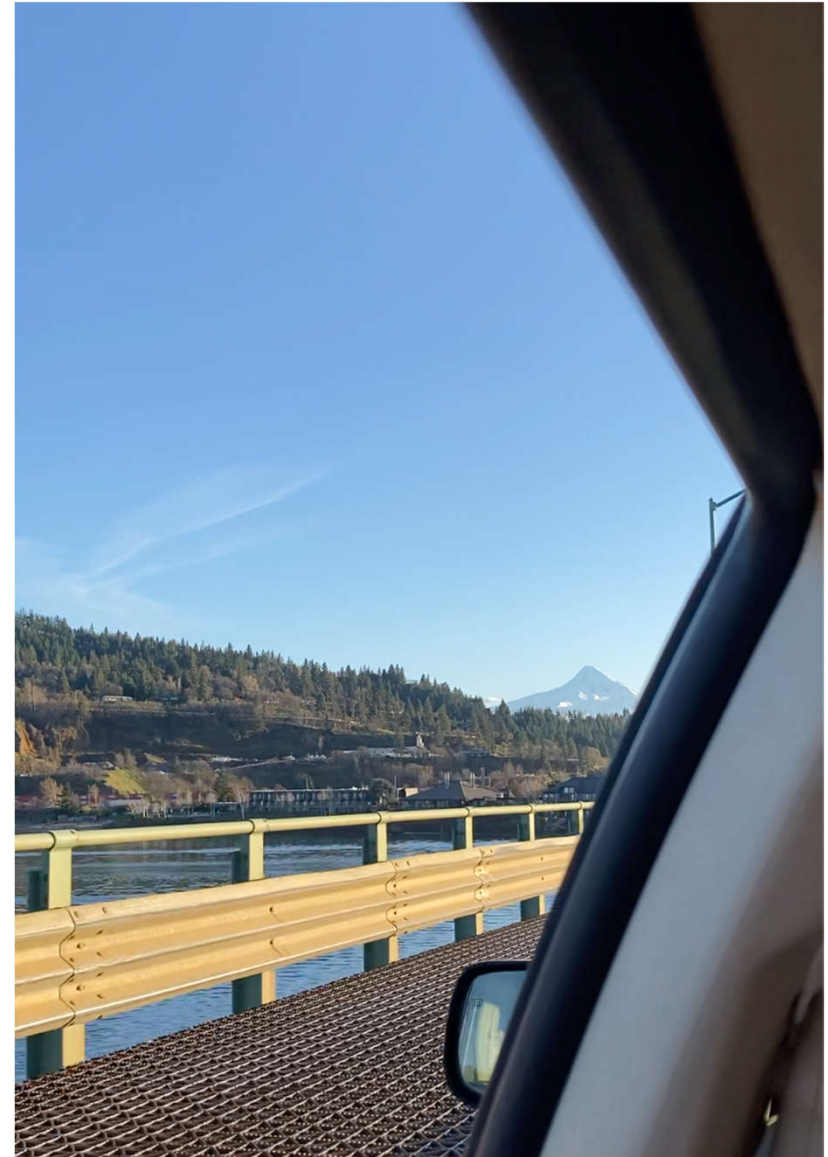
# 우리 발표



Proud boys



오레곤주로 남쪽으로 이동  
(콜롬비아강, 후드산)



## 오레곤주 및 포틀랜드의 인종문제

- 1920년대까지 흑인 거주 금지 (중국인도)
- 흑인 인구 작다 (오레곤: 2%) (포틀랜드: 6%)
- 선주민의 상대적으로 존재 (1.5%)
- 자유주의적 개방적 문화 (워싱턴주와 마찬가지로)
- 네오나치 vs 안티파 (오래된 백인우월주의의 역사와 진보의 충돌)  
2020년 여름 이전부터 다툼

대안세계화운동의 노장들  
(이교블록, 뉴욕--브라드 윌, 그레이버,  
칸쿤—WTO 이경해 열사 ....)





# 발 밑에 있는 땅, 기억의 장소



# 2020년 여름포틀랜드에서 무엇이 있었는가?

- 유리창 깨기와 공공미술—포틀랜드의 상극 혹은 상생?
- 트럼프 vs. 포틀랜드 ( 티비 드라마 Portlandia의 영향)
- 트럼프가 자원봉사 연방 공무원을 모집, 사람들을 납치, 최루탄, 섬광폭탄, 고무탄, 고추폭탄....
- 조직의 부재 (청년해방전선 이외 없음), 인간관계 문제
- “착한 시위자” vs. “나쁜 시위자”
- 라이오트 립즈 (Riot ribs)
- ”엄마들의 벽”, 아빠 부대 (나무잎 청소기 부대), 홍콩의 영향
- 하우스레스의 참가
- 구호의 중요성 (“Stay together, stay tight, we do this, every night”)







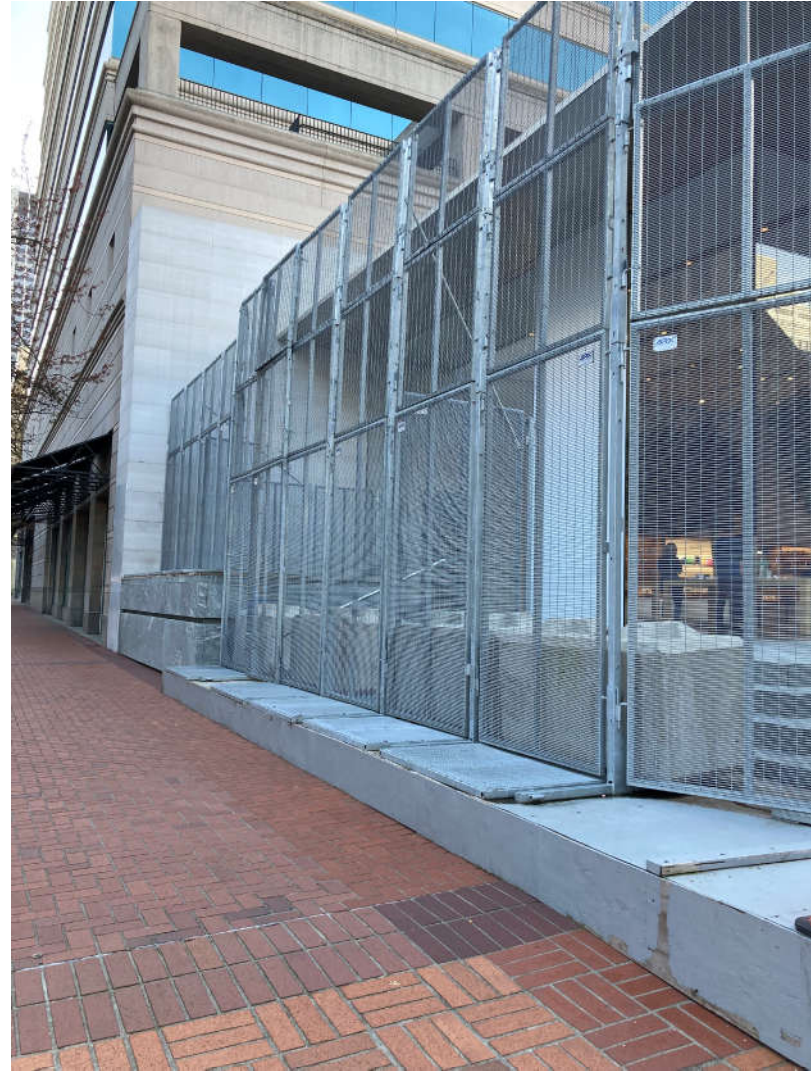


## 애플 스토어, 그 시절

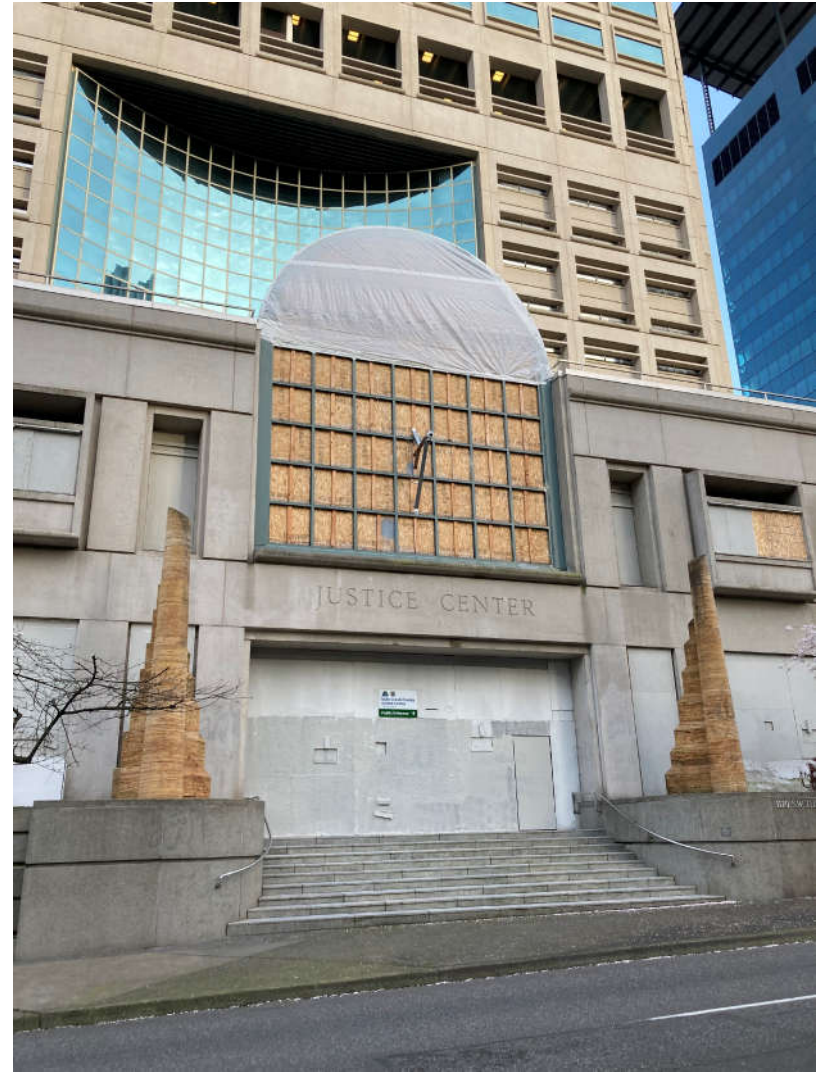




애플 스토어, 2022년3월



Justice Center (경찰서, 구치소, 재판소)

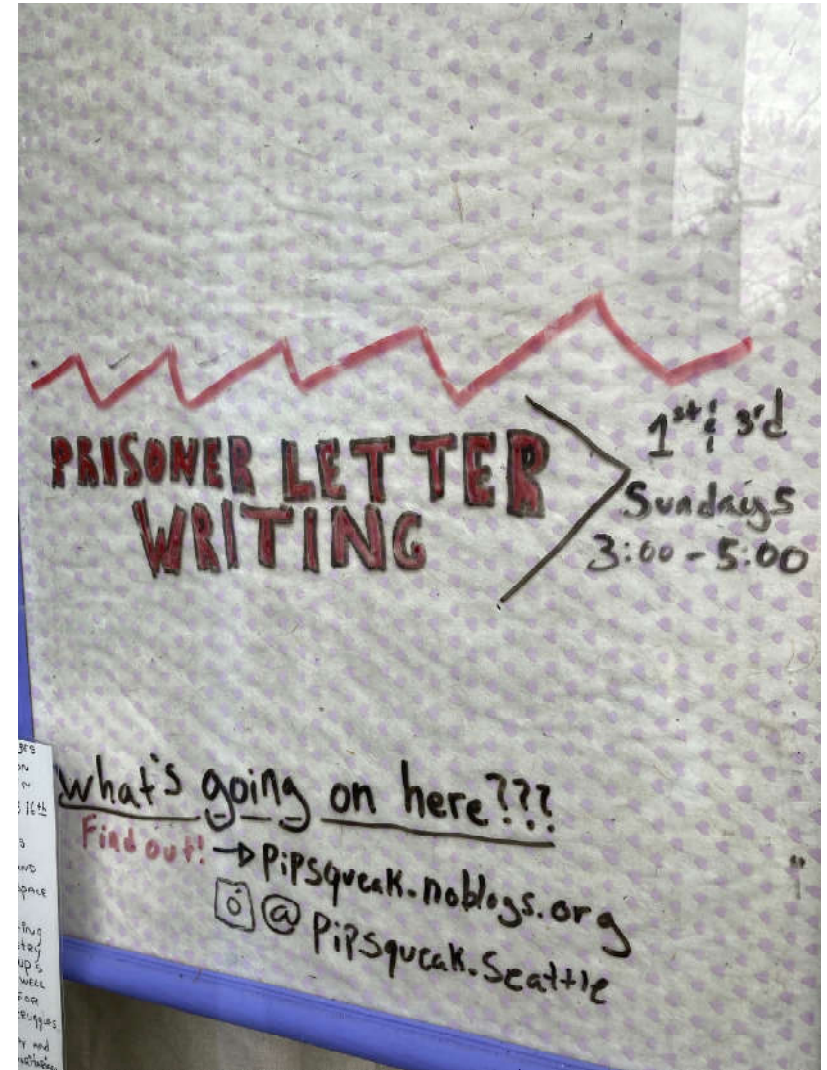




# 시애틀의 인포샵 (다시 워싱턴으로)



# 감옥에 있는 사람들에게 편지 쓰기



경찰 및 감옥에 의해 살해된 사람들의 초상화  
(흑인이 많지만 다른 인종도 있음)





THE DEAD  
FIGHT LIKE  
FOR THE  
LIVING

EMETT  
Summer  
Till  
Ever

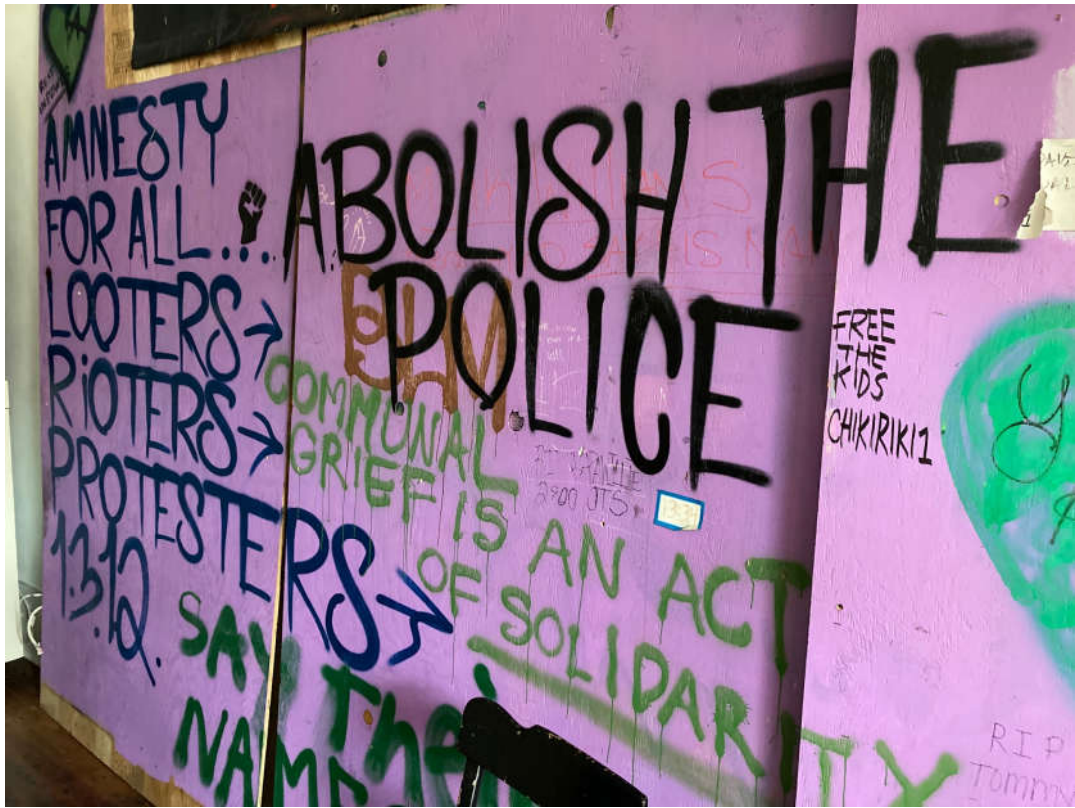
CALVIN L. HORTON · DAVID "YAYA"  
MCATEE · JAMES SCURLOCK · SEAN  
MONTERROSA · SARAH GROSSMAN ·  
JAVAR HARRELL · ITALIA KELLY ·  
MARQUIS TOUSANT · VICTOR  
CAZARES · MALIK GRAVES · DORIAN  
MURRELL · CHRIS BEATY · ROBERT  
FORBES · BARRY PERKINS...  
TONY MCGADEE · JAMEL FLOYD

JUSTICE  
RALL... ABOLISH THE

Matthew  
Folger  
You decided  
so much more  
than this

Sandra  
Blair





## 중서부: 숨은 오래된 근거지

- 인디애나 블루밍턴 (Bloomington) –인디애나대학을 중심으로 한 대학도시
- 도시전체를 아우르는 운동 네트워크
- 2000년대 급진생태운동과 반세계화운동의 만남 – NAFTA, 남북미를 잇는 자유무역을 촉진하는 고속도로 I-69의 건설 반대운동
- 천주교 수녀 및 카톨릭 워커즈
- 운동권 대학 교수, 직원, 학생들











# 주택조합

- 이 집(Middle Earth)에서는 20명이 거주
- 반은 학생
- 입주/퇴거의 회전율이 높음 (대학가, 접속 지점)
- 밥 당번제
- 13년전에 시작
- 현재 4개 집 (5개 째 입수→다음 사진)

# 다섯 번째 공동주택 (주거 및 책방) 예정 건물







# 네 번째 집



- 다음주에 12명이 들어온다.
- 18개 침실 (14개 개인방. 작다)
- 2개 특실 (2침실, 거실, 부엌, 화장실)이 있는데
- 홀어머니가 3살, 6살 아이들을 데리고 살고 있다.
- 예술가인 그는 벽화를 많이 그려놨다.
- 두 아이를 데리고 사는 홀아비도 2층에 산다.

“나는 2년전부터 이 자리를 준비한 과정에 참여하지 않았고 들어온지 몇주밖에 안 됐지만 정말 신들린 시간이었다. 여러 사람들이 릴레이식으로 이 작업을 했더라... 아이들이 뛰어 다니고 가족이 들어올 수 있고 휠체어 접근 가능.... 얼마나 많은 사람들이 이것을 가능하게 만들기 위해 일했는지를 생각하면 정말 감사한다”





“지하실에 샹데리에를 넣는 당신의 생각이야말로 대단해  
총 210평, 그 중 140평이 거주공간이기 때문에 나머지 70평이 옥외로 직접  
연결된 지하실이다. 그래서 그 공간 이용법은 정말 여러 가능성이 있었는데”



“당연히 샹델리에와 볼룸댄스장이죠”





“이 동네에서 90년대에 공유 공간을 만들려고 했던 사람들이 있었는데 실패했었다. 그 실패를 우리가 참고했다”

실험적 공유지 (용접공방, 공동주거, 생태마을). 법적으로는 개인 소유이지만 공동소유의 실험. 현재 5명이 거주.





# Bloomington Cooperative Living (<https://www.bloomingtoncooperative.org>)



Apply Now



Apply Now

Open Rooms

Locations

BCL News

Contact BCL

## Community



### Welcome

Bloomington Cooperative Living creates and maintains affordable, communal housing in the Bloomington area. We are democratically controlled by our members, both at house and cooperative-wide levels.

The Trellis and Middle Earth serve community members at or below 80% of the Bloomington, Indiana HUD metro Area Median Income (AMI). At Which House and Goodlawn, we strive to serve additional members who are above the AMI.



### *The Cooperative*

BCL announced *The Trellis* as the official name of our newest community at 921 West 9th Street. This location offers private bedrooms and two suites with communal living areas. The Trellis is ADA compliant and welcomes families and individuals of all ages. The suites offer private living and bathroom areas.

Middle Earth, which is located just a few blocks west of downtown Bloomington, was our first BCL-owned property featuring 20 bedrooms. BCL leases two additional houses. Which House and Goodlawn are located just south of the Indiana University area off Atwater Avenue.

### *Members*

Between our four houses, BCL consists of over 60 members from all aspects of the South-Central Indiana community. Our members come equally from:

- The Bloomington community
- IU graduate and doctoral students
- IU undergraduates

Our membership consists of individuals, couples and families with diverse backgrounds and experiences. We have an open membership policy via prospective interviews. Anyone who can commit to the principles of cooperative living and the expectations of membership is eligible to join.

### *Join In* **Apply Now**



**WHICH HOUSE has one immediate opening.**

At its core, BCL is all about community. We have:

- House meals and meetings
- Game and movie nights
- Cooperative-wide gatherings
- And community events for the Bloomington and Indiana University areas

We hang out together and support one another.

Bloomington Cooperative Living is a place where countless people have made lifelong friends. We strive to make the cooperative more than just a place to eat and sleep.

## *Join BCL*

### *Apply*

All prospective members of BCL go through a membership process before signing a lease and becoming a part of the BCL community.

Your first step requires you to complete an [online application](#). Access our membership application from our site menu, on house pages and other locations on our site.

### *Interview*

After applying, our membershipers will contact you to schedule an interview which can be done in-person or via Zoom.

During interviews, you'll participate in an informal two-way conversation with current cooperative members. This is a perfect time to ask any questions about BCL, its members, the houses and cooperatives.

### *Visit*

Schedule visits for our houses by responding to the emails we send. We highly encourage you to pitch-in for one of our dinners and stay for a house meeting (typically, Sundays at 7:30 pm).

If you decide to help prepare dinner with our members, don't worry, we aren't asking you to cook alone or to be a super chef.

At the least, you should get a house tour. Since any of our houses could be your new home, we want to ensure you see each house. Also, feel free to attend one of our General Assembly meetings on the second Sunday of each month.



## Rooms & Suites

**Goodlawn**

**NO OPENINGS**

**Middle Earth**

**NO OPENINGS**

**The Trellis**

**NO OPENINGS**

**Project 410**

**COMING SOON**

## SECTION HEADING

**Middle Earth**

**UNAVAILABLE**

1st Floor

104 sq ft

\$503/mo

\$6,030/yr

**Which House**

**NOW AVAILABLE**

Basement

124 sq ft

\$543/mo

\$6,517/yr

**APPLY NOW**



Middle Earth is BCL's largest house and the first property we owned. Located downtown, the historic Queen Anne house boasts a wrap-around porch, large kitchen with dining area, and three additional common areas.

## ROOMS

**NO OPENINGS**

**NO** Rooms  
**AVAILABLE**

**UNAVAILABLE**



Room 1

**UNAVAILABLE**



Room 2

**UNAVAILABLE**



Room 3







# ROOMS

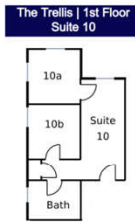
APPLY NOW 

NO OPENINGS



**COST OF LIVING**

UNAVAILABLE



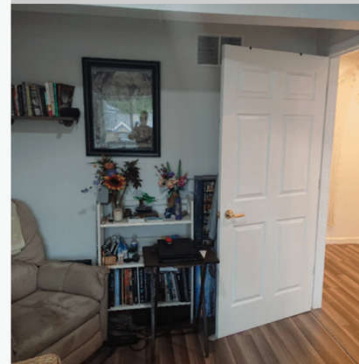
**Suite 10**  
1st Floor  
472 sq ft

**COST OF LIVING**

**\$944/mo**      **\$11,328/yr**

- Features**
- Private living area
  - Private bathroom
  - 2 bedrooms
  - 5 Windows

UNAVAILABLE



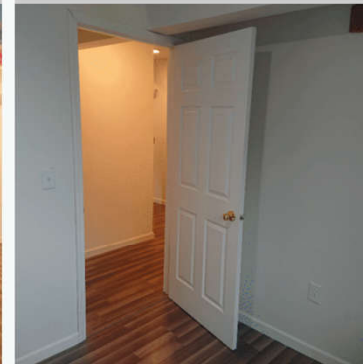
**Room 11**  
1st Floor  
132 sq ft

**COST OF LIVING**

**\$640/mo**      **\$7,675/yr**

- Features**
- 1 window
  - No closet

UNAVAILABLE



**Room 12**  
1st Floor  
81 sq ft

**COST OF LIVING**

**\$481/mo**      **\$5,769/yr**

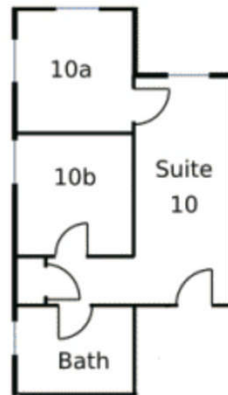
- Features**
- 1 window
  - No closet



The Trellis | 2nd Floor



The Trellis | 1st Floor  
Suite 10



900,000달러

The Trellis | 2nd Floor  
Suite 27















- 하위문화의 운동이 무너질 때 그 밖에 있는 세력이 그것을 주류 문화 속에서 살리는 순환이 일어났다. 예: 자전거 공간
  - 이 공간 또한 실패로 규정된 역사를 가지고 있다





[ABOUT](#)   [MACHINES](#)   [EXTREME BUILDS](#)   [VIDEOS](#)   [PRODUCTS](#)   [GET INVOLVED](#)

## Open Source Blueprints for Civilization. Build Yourself.

See an overview of Open Source Ecology's work describing the [Global Village Construction Set](#):



We're developing open source industrial machines that can be made for a fraction of commercial costs, and sharing our designs online for

# Open Source Ecology

From Wikipedia, the free encyclopedia



**A major contributor to this article appears to have a close connection with its subject.** It may require cleanup to comply with Wikipedia's content policies, particularly neutral point of view. Please discuss further on the talk page. *(July 2020)* *(Learn how and when to remove this template message)*

**Open Source Ecology (OSE)** is a network of farmers, engineers, architects and supporters, whose main goal is the eventual manufacturing of the **Global Village Construction Set (GVCS)**. As described by Open Source Ecology "the GVCS is an open technological platform that allows for the easy fabrication of the 50 types of industrial machines that it takes to build a small civilization with modern comforts".<sup>[3]</sup> Groups in [Oberlin, Ohio](#), [Pennsylvania](#), [New York](#) and [California](#) are developing blueprints, and building prototypes in order to test them on the *Factor e Farm* in rural [Missouri](#).<sup>[4][5][6]</sup> 3D-Print.com reports<sup>[7]</sup> that OSE has been experimenting with [RepRap 3-D printers](#), as suggested by academics for [sustainable development](#).<sup>[8]</sup>

## Contents [hide]

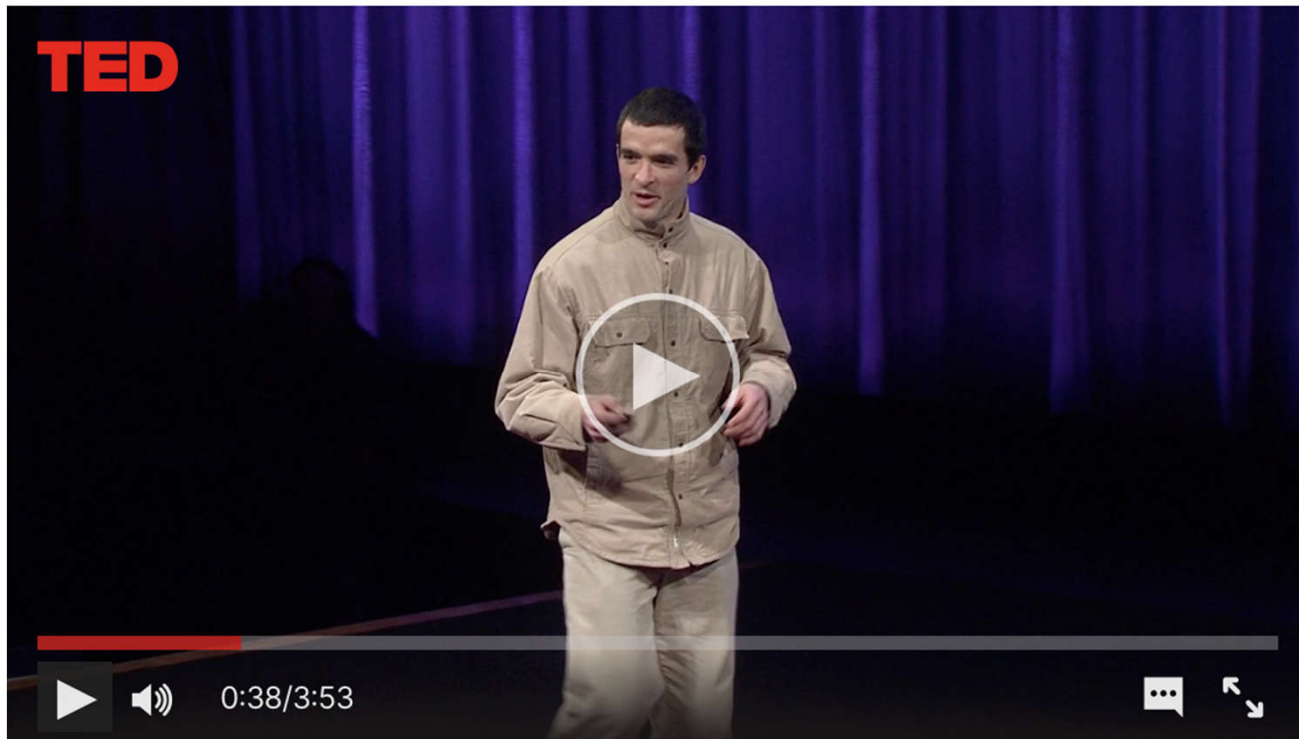
- 1 [History](#)
- 2 [Factor e Farm](#)
- 3 [Current progress](#)
- 4 [Awards and recognition](#)
- 5 [List of machines](#)
- 6 [GVCS replication](#)
- 7 [See also](#)
- 8 [References](#)
- 9 [External links](#)

## Open Source Ecology



|                      |  |
|----------------------|--|
| <b>Abbreviation</b>  | OSE  |
| <b>Formation</b>     | 2003; 19 years ago   |
| <b>Headquarters</b>  | Factor e Farm  |
| <b>Location</b>      | Maysville, Missouri, USA. <sup>[1][2]</sup>                                      |
| <b>Region served</b> | Worldwide  |
| <b>ED</b>            | <a href="#">Marcin Jakubowski</a>  |
| <b>Budget</b>        | \$15,000 monthly   |
| <b>Website</b>       | <a href="https://opensourceecology.org">Opensourceecology.org</a> <span>↗</span> |

- 폴란드출신의 물리학자 마신 자쿠보우스키가 2003년에 설립



**TED**



**Theirs.**

**Used at \$25,000 - \$120,000**

**Ours.**

**New at \$12,000**



0:30/3:53







- 여기서 DIY로 만든 벽돌(지산지소)로 거대한 집을 만들려고 했다가 실패. 높은 거대 벽돌 건물 완전 붕괴. 약 5000만원 날림.
- 계획: 3개 침실을 갖춘 집 10채, 15개 침실 공동주거, 200평 공방, 먹거리 숲
- 현재 모두 자연과 불법 건축들이 그 자리에 들어옴.
- 현재 BCL에서 나온 개인이 샀지만 우리가 조직적으로 준비되었을 때 원가로 팔 예정. 원래 계획을 이어 받을 수 있다.
- 고민: 프로가 되지 않고 얼마나 BCL은 확장할 수 있을까?향후 5-10년 50명을 추가.
- 은행은 이 계획에 적극적이다.
- 도시 속 2500평 땅



- 200만 달러 예산....

**April 19th, 1997; Indianapolis:**  
A truck belonging to Archer's Meats was set afire.

**February 28th, 1998; Indianapolis:**  
A window was broken at The Outdoorsman Sport Shop and the building was lit on fire. Slogans were also painted at the store.

**January 23rd, 2000; Bloomington:**  
Arson destroys a partially-built luxury home in a complex, owned by one of the developers. "No sprawl ELF" was found spray-painted in black on a sign near the house." The ELF issued a communique saying it torched the home because it was in the Lake Monroe Watershed, which provides drinking water to the city of Bloomington and was already jeopardized by the surrounding developers. Damages: \$200,000.

**April 30th, 2000; Bloomington:**  
At least six pieces of logging and heavy construction equipment were sabotaged and a trailer full of wood chips was set ablaze at a road construction site just outside the city. A communique from the ELF explains its plan was to punish those developing wooded areas around Bloomington, which "have turned what was once forested land into parking lots, luxury houses for rich scum and expanded roads." Damages: \$75,000.

**July 2nd, 2000; North Vernon:**  
A Rose Acre Farm chicken feed truck was torched, and "polluter, animal exploiter, your turn to pay," was spraypainted at the scene. Damages: \$100,000.

**September 9th, 2000; Bloomington:**  
Fire erupts at the headquarters of the Monroe County Republican Party Committee headquarters. A flammable liquid was poured on the building and ignited. The fire was a reminder, according to the ELF communique, that people would not all qualify as politicians pushed for plans to extend I-69, an ecologically destructive highway.

**October 18th, 2000; Shoals:**  
Four pieces of heavy logging equipment in the Martin State Forest had their hoses cut, seats slashed, gauges destroyed and sand poured in the engines, fuel tanks and radiators. Damages: \$55,000.

**May 3rd, 2002; Bloomington:**  
A Sims Poultry truck was burned.

**October 24th, 2003; Martinsville:**  
A Wal-Mart construction site was sabotaged. Survey stakes were removed, and walls and machinery spray-painted. Over a dozen pieces of heavy machinery and vehicles were vandalized, with slashed tires, cut fuel hoses, and sand poured in their fuel tanks.

From the communique:  
*We know that life does not have to be one monotonous routine played out over and over again. We know that the places we live can offer us much more than Wal-Marts and McDonalds and Chevrons. We know, because at times we have experienced a break with this reality, and know that other possibilities exist. And how can things change really? For us, sabotage may not be a means to change any world but our own, as an expression of our feelings toward this society. We strike for ourselves, out of our own frustrations, and rage and despair...as a means of therapy and adventure. Because to not act, or to resign oneself to such an impoverished life of working and consuming is not good enough for us. We are not content and we intend to express this. This society offers us shit. How can we repay them?*



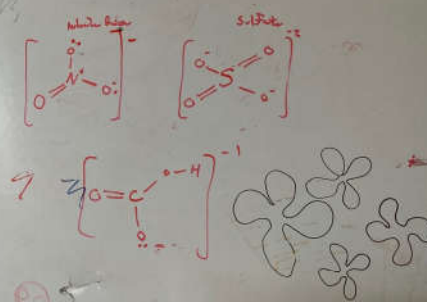
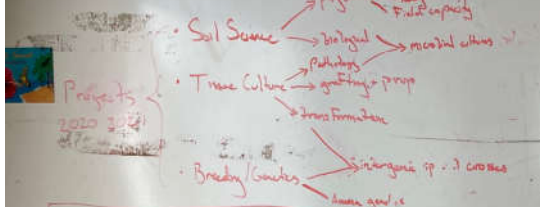






Deep in the human unconscious, a pervasive need for a logical universe that makes sense. But the real universe is always one step beyond logic

Clay Complexes,  $\text{Na}^+$ ,  $\text{Ca}^{2+}$ ,  $\text{Mg}^{2+}$ ,  $\text{K}^+$   
 (anions)  $\text{NO}_3^-$ ,  $\text{SO}_4^{2-}$ ,  $\text{HCO}_3^-$ ,  $\text{OH}^-$



San Solstice

**OBSTACLES**

- POLICE HARM
- IN MED. EMERGENCY
- CONFLICT RESOLVE
- STRUCTURE FOR COLLECTIVE PROP.











# Bloomington Community Bike Project

Teaching bicycle repair skills and reshaping our community for sustainable commuting.







프로젝트 중 유일하게 지급능력이 있는 곳. 이  
활동의 시작이 자전거 펑크 bike punk 문화였다.





인디애나 회복 연합: “어떤 긍정적인 변화도”



~~“나쁜 것은 나쁜 것이다” “절대 안 돼”~~

One of our most important functions is to serve as an access point for the many other services we provide directly or to refer to our numerous community partners



“마약과의 전쟁은 우리에게 대한 전쟁이다” “범죄화는 즉시 죽음이다” “감옥의 성장을 멈춰”  
“사람 > 이익” .....





우리를 지배하는 해로움을 덜 해롭게 해서 살자는 것일까?.









# 수감자 지원











You dream of a sustainable, more resilient world.

Hone your skills and live your passions with others in your community to create that world right here in Bloomington, Indiana.

# 기타....

- “20년 전에 아주 작은 씬에서 개발된 실험적 실천들이 이제 완전히 일반화되었다. 오늘날 자본가들조차 그런 것을 한다 (퀴어 같은 걸 이야기하는 듯)”
- 사회의 여백/잉여/극단에서 새로운 세상의 가능성을 찾다.  
RE/Search, 하킴 베이(Hakim Bey), 세미오텍스트(Semiotext),....
- <https://www.enspiral.com> (뉴질랜드의 탈자본주의 공동체, 스타트업 기업가, 프리랜서들의 프로젝트)









